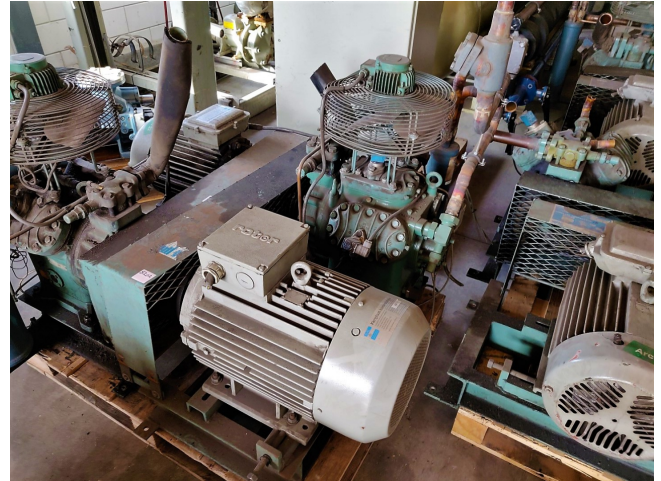


# Bitzer 6H 2

## Specifications

Merk	Bitzer
Type	6H 2
Koudemiddel	Freon
kW at 0°C/+40°C	89,9
kW at -5°C/+40°C	74,9
kW at -10°C/+40°C	61,8
kW at -20°C/+40°C	40,6
kW at -30°C/+40°C	25
Elektromotor Specs	22
Op stalen frame	✓
Olie level systeem AC&R	✓
Opmerkingen	R404a - R22 or other freon types
Afmetingen	1000x800x900 mm (LxWxH)
1360	For more information please see attachment below / Capacity based on 1x Bitzer compressor
Stock	2



## Description

### Used Bitzer 6H 2

Gebruikte Bitzer 6H Compressor op skit / 900-1750 RPM / Leroy Somer LS 63A-S1-60W // Elektromotor: Rotor-nl: XC180L04

